

1

Set sliding door fittings **Flatec IV**

2

Guide rail

3

Door stoppers

5

Wall fixtures

5/16"-18UNC

(without screws and dowels, at construction site)
* not included in scope of delivery.

6

Special tool

SW 5

7

Bottom guide

(without screws and dowels, at construction site)

4

Trolley complete

Set Flatec IV	Set /Each					
1 Art. No.	2	3	4	5	6	7
USU94-1800EF	1	2	2	4	1	1
USU94-2100EF	1	2	2	4	1	1
USU94-2300EF	1	2	2	5	1	1
USU94-2540EF	1	2	2	5	1	1

Also valid for polished version USU94-...EP

Beyerle US L.L.C., ABP-Byerle it's subsidiaries and agents are not responsible or liable for damage or injury to any persons or property due to improper installation of it's products.
All liabilities reside solely with the installer.

Beyerle US L.L.C.
5126 South Royal Atlanta Drive, Tucker, GA 30084
Phone (770) 349-6324, Fax (770) 934-3384, www.beyerle-us.com

Comply with all general safety regulations when installing the sliding door fittings!

Installation to be completed by qualified licensed contractor.

Be sure to tighten all screw connections one week after starting to use the sliding door fittings!

Never use scouring agents to clean the sliding door fittings; rather use commercially available stainless-steel cleaners!

Attention

Screw on

Screw on

Screw on

Loosen/Tighten

Install

At right angle

Drill

Dowels

Adjust Set

Level

Perpendicular

Measure Mark

Visual inspection

Special-tool

2 people required

Measure

Clarify questions

See Instructions

Secure

65_30_00.0164_USU94_MONT_US

Installation instructions

Sliding door fittings **Flatec IV**

for glass doors (5/16" - 1/2" thickness)

Diagram illustrating the installation of sliding door fittings **Flatec IV** for glass doors (5/16" - 1/2" thickness). The diagram shows the components and dimensions for the installation.

Dimensions and components labeled:

- A: Total width of the sliding door system.
- B: Distance between wall fixtures.
- C: Distance from wall fixture to door edge.
- D: Distance between bottom guides.
- E: Total height of the sliding door system.
- F: Distance from bottom guide to door edge.
- G: Distance from wall fixture to door edge.
- H: Total height of the sliding door system.

Components labeled:

- Guide rail
- Door stoppers
- Wall fixtures
- Special tool
- Bottom guide

Warnings:

- You must check the position of the wall fixtures and the door stopper before installation!
- Warning! Proper header or mounting beam must be installed the full length of the sliding door rail to provide adequate support for sliding door system weight of door!

glass doors 5/16" - 1/2" tempered safety glass max. 320 lbs (145 kg)

Complete-sets Also valid for polished version USU94-...EP

Set Flatec IV Artikel-No.	A inch	B inch	C Each	D inch	E max. inch	F inch	G inch	H max. inch (H=E-F+1")
USU94-1800EF	70 7/8"	20 1/4"	4	29 1/2" – 35 7/16"	98 7/16"	1/4"–3/8"	2 3/8"	99 1/8"
USU94-2100EF	82 11/16"	24 1/8"	4	35 13/16" – 39 3/8"	98 7/16"	1/4"–3/8"	2 3/8"	99 1/8"
USU94-2300EF	90 9/16"	20 1/16"	5	39 3/4" – 44 1/16"	98 7/16"	1/4"–3/8"	2 3/8"	99 1/8"
USU94-2540EF	100"	22 7/16"	5	44 1/2" – 49 3/16"	98 7/16"	1/4"–3/8"	2 3/8"	99 1/8"

Right to make technical changes reserved - Dimensions in inches - Version 03.2016
© by ABP-Beyerle GmbH

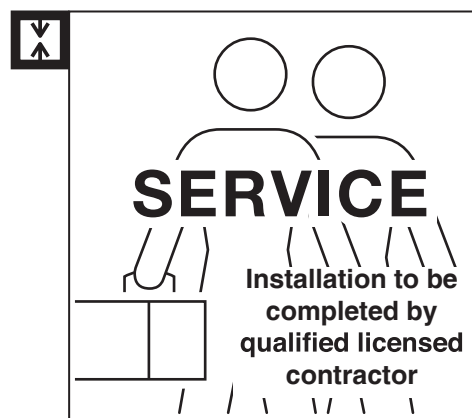


Fig. 1

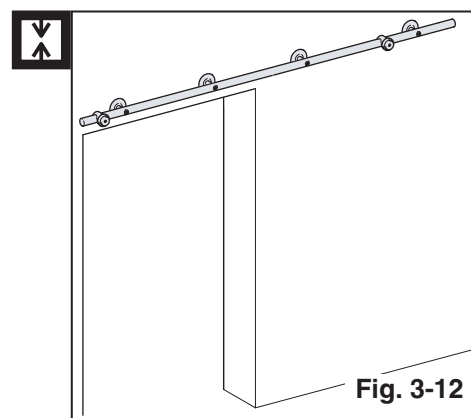


Fig. 3-12

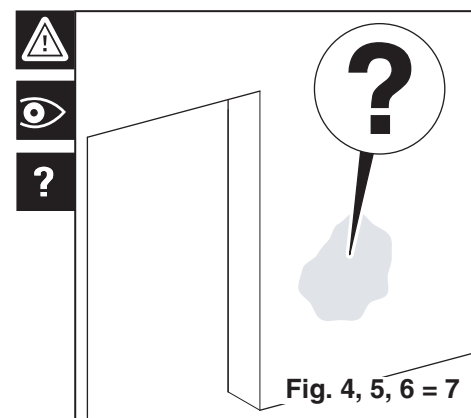


Fig. 4, 5, 6 = 7

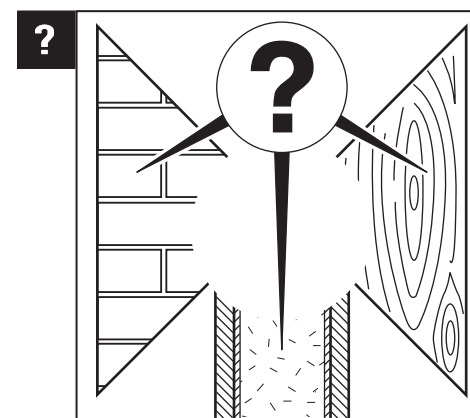


Fig. 4

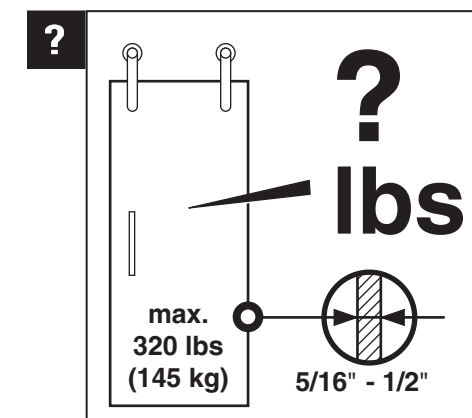


Fig. 5

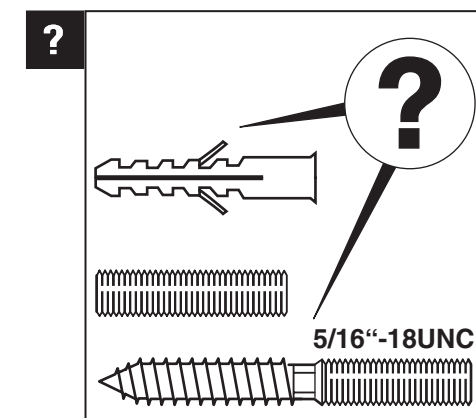


Fig. 6

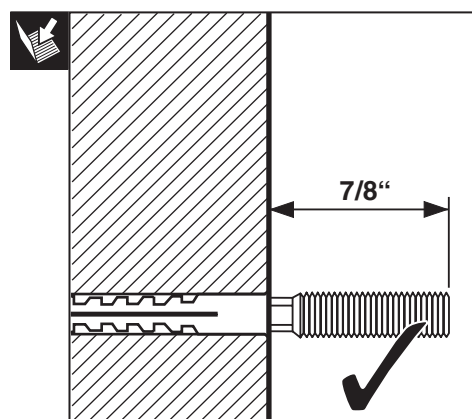


Fig. 7

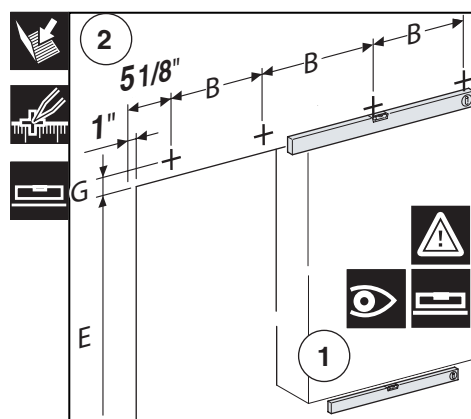


Fig. 8

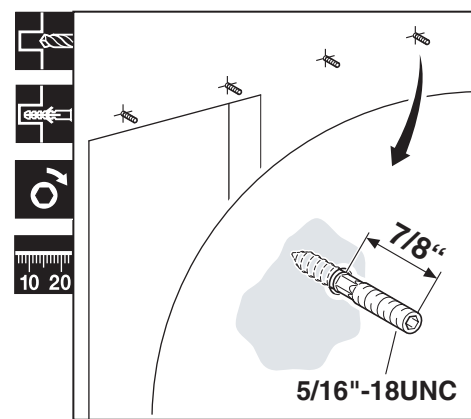


Fig. 9

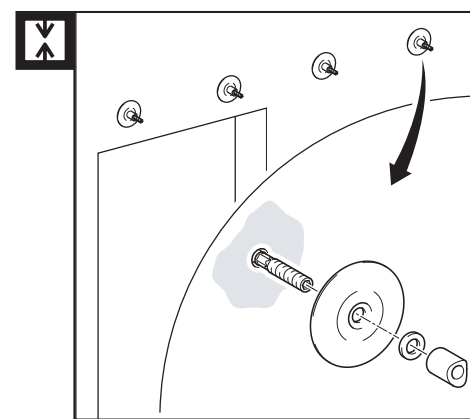


Fig. 10

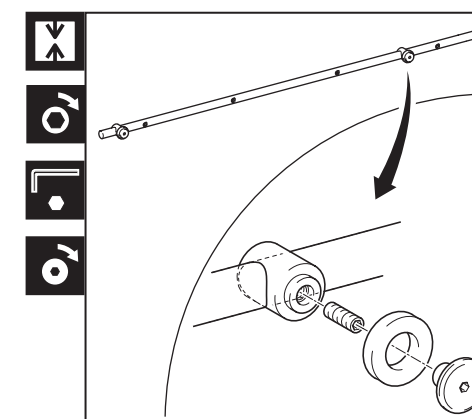


Fig. 11

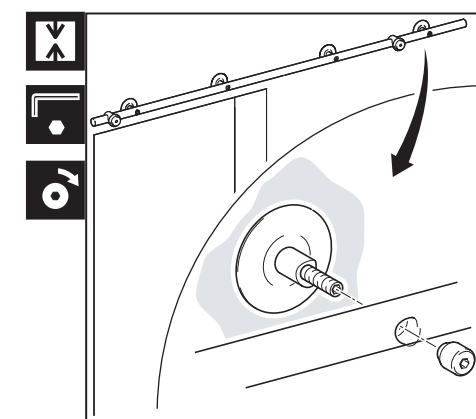


Fig. 12

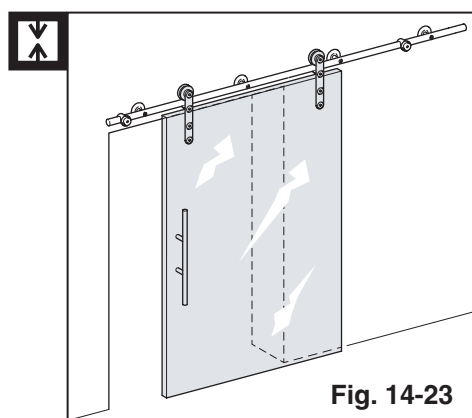


Fig. 14-23

Fig. 13

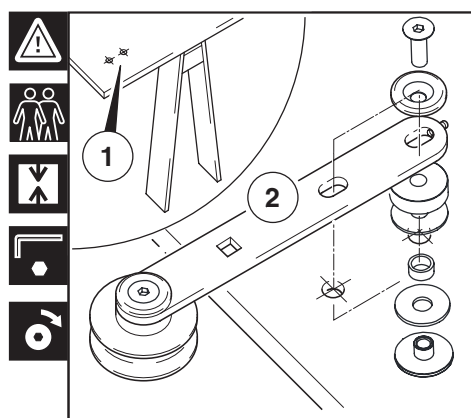


Fig. 14

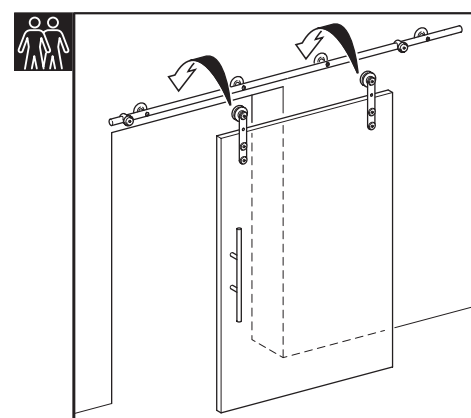


Fig. 15

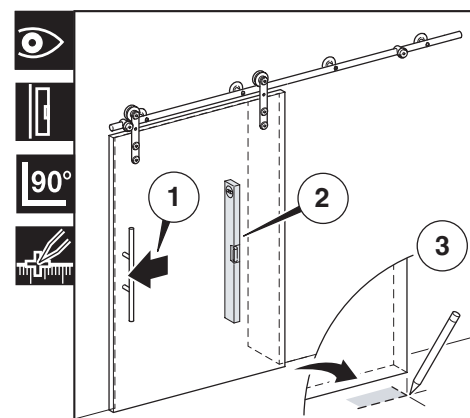


Fig. 16

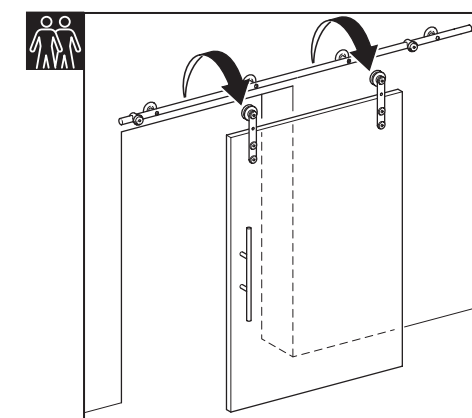


Fig. 17

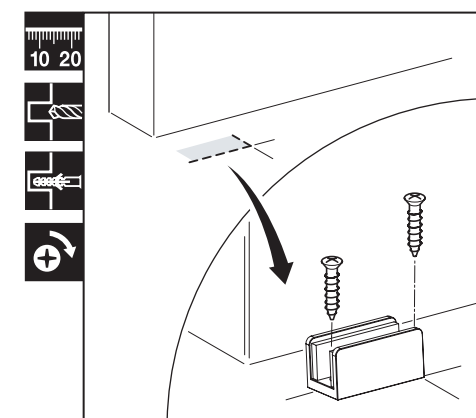


Fig. 18

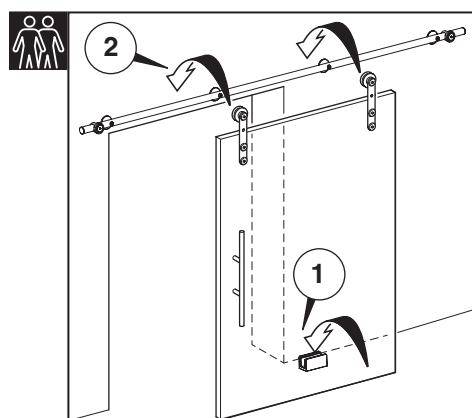


Fig. 19

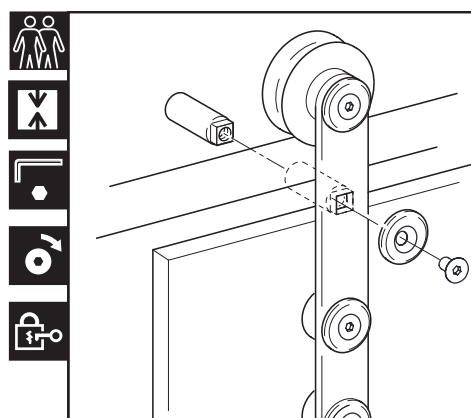


Fig. 20

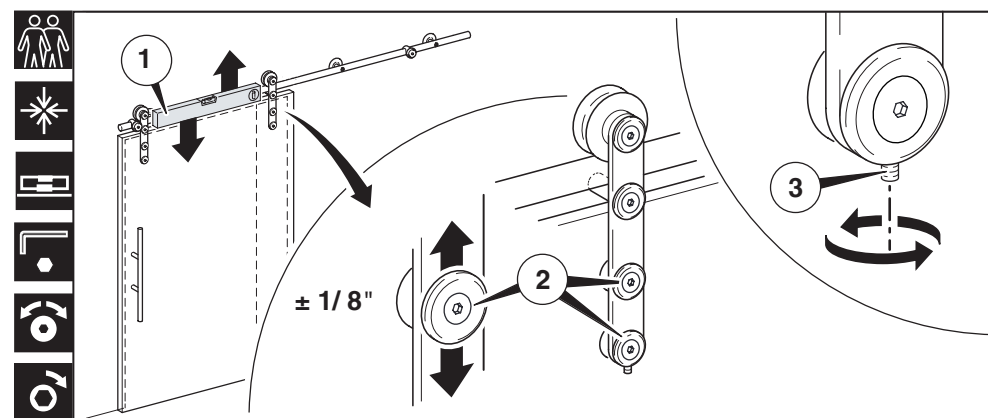


Fig. 21

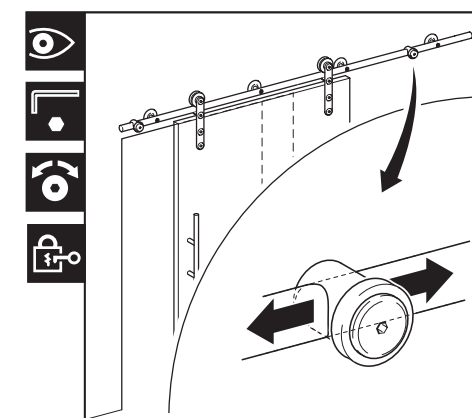


Fig. 22

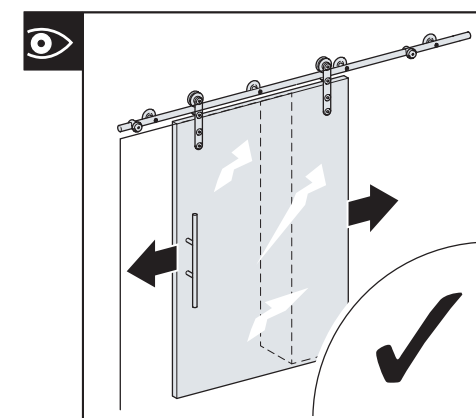


Fig. 23